

Fediversity architecture meetup

Goals of this meeting:

- 1) Discuss if the diagram reflect the current approach correctly.
Are all components & layers correctly described? Is there something missing?
- 2) Gather information on status of the project.
What has already been done, what is in progress & what needs to be done.
- 3) Refine roles & responsibilities between the team members in relation to the architecture components
Write this down on the wiki (internal info)
- 4) If time allows, discuss our our participation at FOSSDEM (see previous sent mail).
Do we want to participate? Submission deadline 1 dec! What are we able to demo? What needs to be done to achieve this?

Diagram discussion

Are all components & layers correctly described? Is there something missing?

What has already been done? What is in progress (estimates)? What needs to be done?

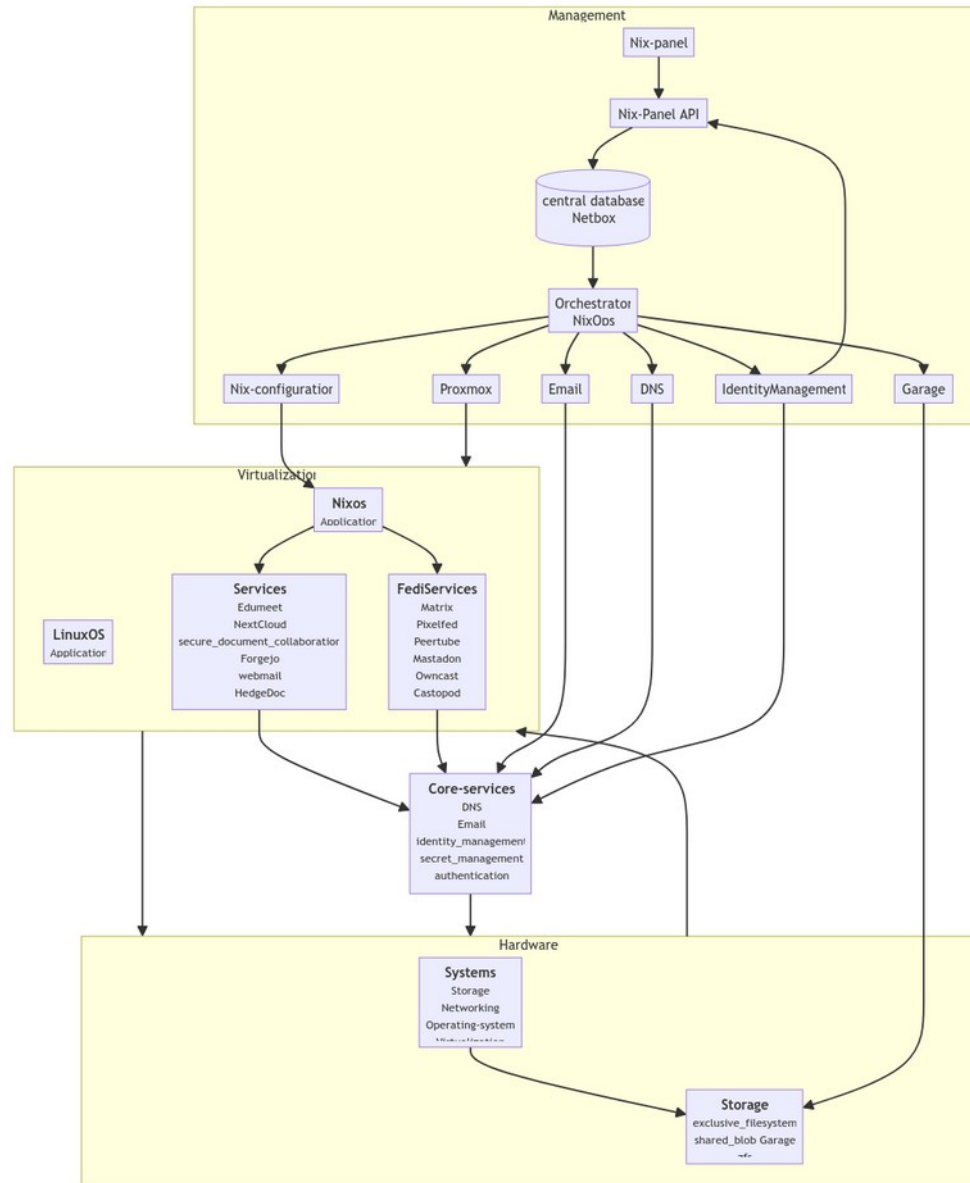
Pref. outcomes:

- Able to “freeze” architecture & deliver req. deliverable
- Get insights into the current status of the work in relation to planning

*NB: This diagram will be used for the foreseeable future to plan our work & communicate our progress
WP2 D2.5 Technical architecture document - Due month 6*

Source:

<https://git.fediversity.eu/Fediversity/meta/src/branch/main/architecture-docs/Fediversity-architecture-notes-1.svg>



Roles & responsibilities

Who is working on what? Who decides what & how?
Composition of the team.

Pref. Outcomes

- Insights in how the different team members work together
- Allow the team members to keep each other accountable
- 'Formalise' workflow/processes in the team on the wiki (make onboarding easier)

NB: We – the different organisations are jointly responsible for the technical implementation

FOSSDEM

- 1) Do we want to participate? Submission deadline: 1 dec
- 2) Which devrooms & what do we want to show & what needs to be done to realize this?

See also email:

'Fediversity: FOSSDEM participation. Please respond before Friday 22 nov 2024.'